


INTERIM USE PERMIT--CONCEPT

- ▶ PTAG TO EVALUATE SPRING/SUMMER 2019
 - ▶ BOUNDARY TO GENERALLY INCLUDE AREA WEST OF UWT
 - ▶ CURRENT - MINIMAL TO NO RESTRICTIONS OR REGULATIONS
- 


INTERIM USE PERMIT--CONCEPT

- ▶ SIMILAR IN FEEL TO THE RESIDENTIAL PARKING PERMIT
 - ▶ SHORT TERM PARKING OR BY PERMIT
 - ▶ ALLOWS DOWNTOWN LONGER TERM USERS (EMPLOYEES, RESIDENTS, STUDENTS) OPPORTUNITY TO PURCHASE ON-STREET PARKING BEYOND TIME REGULATIONS
 - ▶ ADDITIONAL TOOL TO BACK FILL IN AREAS WHERE MANAGED SHORT TERM PARKING SHOWS LOWER THAN DESIRABLE OCCUPANCIES
 - ▶ USE OF UNDERUTILIZED PARKING AS A MEANS TO MAXIMIZE SUPPLY AND SUPPORT REVENUE GENERATION AND EXPENSE RECOVERY
- 


INTERIM USE PERMIT—LOGISTICS

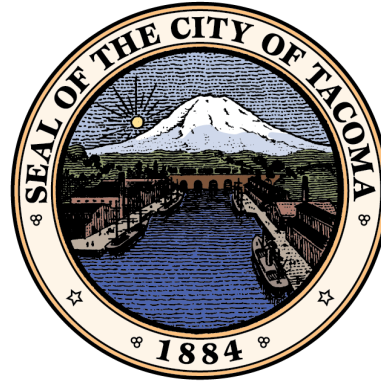
- ▶ PERMIT SALES LIMITED TO BLOCK FACES OF A CERTAIN OCCUPANCY
 - ▶ BLOCK FACES BELOW “EFFICIENT & ROBUST” OCCUPANCY? (LESS THAN 70%)
- ▶ PERMITS SOLD AT “MARKET RATE”
 - ▶ TARGET OCCUPANCIES BETWEEN 70-85%
 - ▶ BASE COST = COST RECOVERY OR JUST ABOVE BUS PASS PRICE?
 - ▶ # OF PERMITS CONTROLLED SO SUSTAINED OCCUPANCIES DO NOT EXCEED 85%
 - ▶ SALES SHOULD BE ADJUSTED (PRICE AND QUANTITY) BASED ON OCCUPANCY DATA
 - ▶ QUARTERLY, SEMI-ANNUALLY, ANNUALLY, BI-ANNUALLY?
 - ▶ PERMIT SALES VIA MOBILE APPLICATION?
 - ▶ CAN BE SOLD IN VARYING TIME BLOCKS—DAILY, WEEKLY, BI-WEEKLY, MONTHLY
 - ▶ POSSIBLE DISCOUNT FOR CARPOOL/VANPOOL?
- ▶ LONG TERM PERMITS CAN BE REDUCED IF SUPPORT FOR SHORT TERM REGULATIONS IS IDENTIFIED

INTERIM USE PERMIT—GOALS

- ▶ REDUCE the number of single occupancy vehicles
 - ▶ Maximize use of the right of way
 - ▶ Maintain occupancies at “efficient and robust” levels
 - ▶ Shift parking behaviors on constrained blocks to those blocks with lesser occupancies
- 

INTERIM USE PERMIT—IMPLEMENTATION

- ▶ MAY NEED REWRITE OF 11.05.260—CHECKING WITH LEGAL
 - ▶ ELIGIBLE ONLY ON BLOCK FACES WITH 55% OR LOWER OCCUPANCIES (GREEN BLOCKS)
 - ▶ PERMIT SALES SCALABLE TO ACHIEVE 70-84% OCCUPANCIES
 - ▶ RAMP UP SALES WHEN OCCUPANCIES ARE LOW
 - ▶ SCALE BACK SALES WHEN OCCUPANCIES ARE HIGH
 - ▶ RECALIBRATED ANNUALLY WITH OCCUPANCY AND COMPOSITION ANALYSIS?
 - ▶ INITIAL PERMIT COST COMPARABLE TO ADJACENT MARKET RATES?
 - ▶ AREAS WITH NO “MARKET RATES” WILL BE SET AT COST RECOVERY
 - ▶ PERMITS SOLD VIA MOBILE APP?
- 



Six-Year Transportation Improvement Program

City of Tacoma | Public Works

Infrastructure, Planning, and Sustainability

February 27, 2019

ITEM #3





OVERVIEW

- Background
- Projects to be added and removed
- Grant and Potential Grant Projects
- Next Steps



● ● ● BACKGROUND

- Capital Projects (included in TIP)
 - Arterial roadways, bridges, bike facilities, sidewalks, trails, curb ramps
- Maintenance Projects (not included in TIP)
 - Potholes, chip seal, residential overlays, Transportation Benefit District projects
 - Most Streets Initiatives



ISSUES



- Necessary to compete for and obtain State & Federal grants
- Lists planned & budgeted transportation projects
 - Vetted by Transportation Commission
- Based on anticipated revenues and desirable projects
- Inclusion does not guarantee funding or completion



Projects to be Removed

- 6 Completed Projects
- 2 Removed Projects
 - Residents no longer interested (LID)
 - Change in project scope



Projects to be Added

- 16 New Projects
 - Funded Projects
 - Projects Pursuing Grant Funds
 - Projects Requesting City Funds

6th Avenue Pedestrian Crossing Safety Improvements



- Scope: Pedestrian crossing improvements along 6th Avenue between Jackson Avenue and Sprague Avenue
- Funding: \$2,613,100 Federal Safety Grant \$401,500 Streets Initiative

Mary Lyon Elementary Safe Routes to School



- Scope: School crossing improvements
- Funding: \$240,881 SRTS Grant \$42,508 Streets Initiative

S Yakima Avenue Traffic Signal

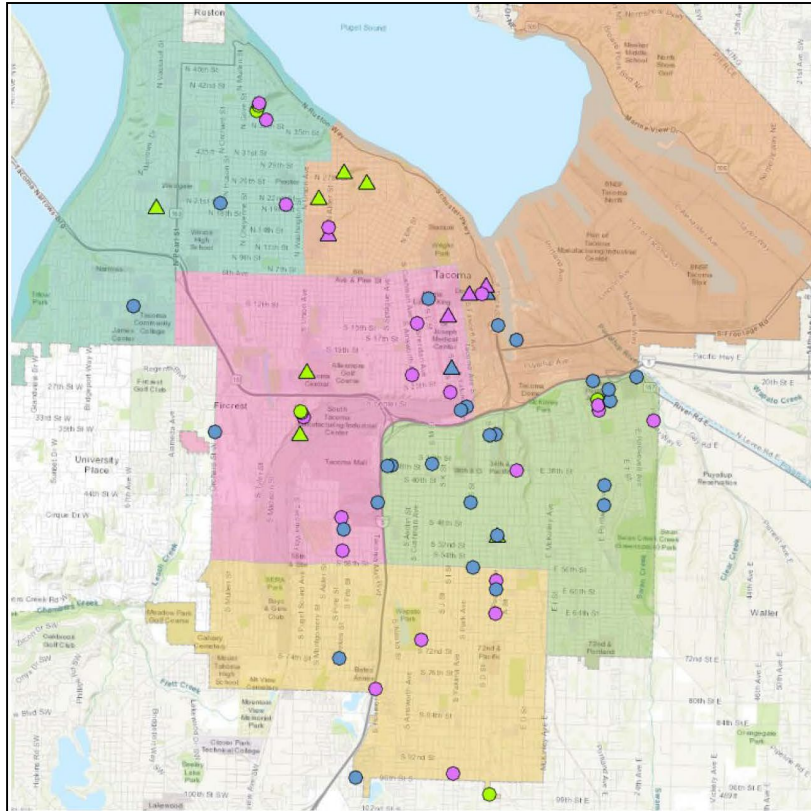
Operations & Visibility Improvements



- Scope: Pedestrian crossing improvements along 6th Avenue between Jackson Avenue and Sprague Avenue
- Funding: \$1,010,400 Federal Safety Grant \$112,300 Streets Initiative



Streetlight Poles/Circuit Replacements



	Year Damaged			Total
	2013/14	2015/16	2017/18	
Streetlight Poles	5 Lights	20 Lights	27 Lights	52 Lights
Streetlight Circuits	7 Circuits 7 Lights	4 Circuits 5 Lights	2 Circuits 6 Lights	13 Circuits 18 Lights
Total:	12 Lights	25 Lights	33 Lights	70 Lights

- Scope: Replacement of 70 streetlights out of service due to uninsured driver knockdowns, failed assets, tree limb and root caused damage, etc.
- Funding: \$850,000 REET

2018 Grant Awards



Project	Granting Agency	Grant Dollars
Safe Routes to School Education	WA Traffic Safety Commission	\$60,000
Portland Avenue Freight & Access Improvements	PSRC Countywide	\$370,430
South I Street Overlay	PSRC Countywide	\$750,000
Cultural Shift to Active Transportation	PSRC Countywide	\$425,000
Mary Lyon Elementary School SRTS	WSDOT SRTS	\$240,881
South 19 th & Clay Huntington	WSDOT Ped/Bike	\$500,517



2018 Grant Awards

Project	Granting Agency	Grant Dollars
City Safety Program – Systemic Safety Improvements	HSIP City Safety Program	\$800,100
6 th Avenue Pedestrian Crossing Safety Improvements	HSIP City Safety Program	\$2,613,100
Yakima Avenue Traffic Signal Operations and Visibility Improvements	HSIP City Safety Program	\$1,010,400
Pedestrian & Bicycle Counts and Facility Inventories	HSIP City Safety Program	\$210,600



● ● ● HEALTH, EQUITY & SUSTAINABILITY ANALYSIS

- The Six Year Program includes transportation projects that support:
 - Active transportation with greater health equity
 - Biking and Walking
 - ADA improvements



OUTREACH



- Memo and presentations to Transportation Commission, Community Council, and Cross District Association
- City of Tacoma Website includes the 6 year program and Transportation Master Plan
- Projects include outreach in various forms depending on the project scope and community needs



● ● ● NEXT STEPS

- March 27th IPS 2nd Review & Recommendation
- April 9th City Council Study Session*
- April 30th City Council Public Hearing*
- June 28th Ordinance Effective Date*

* Tentative Dates



Six-Year Transportation Improvement Program

City of Tacoma | Public Works


Infrastructure, Planning, and Sustainability

February 27, 2019


ITEM #3



INTERIM USE PERMIT--CONCEPT

- ▶ PTAG TO EVALUATE SPRING/SUMMER 2019
 - ▶ BOUNDARY TO GENERALLY INCLUDE AREA WEST OF UWT
 - ▶ CURRENT - MINIMAL TO NO RESTRICTIONS OR REGULATIONS
- 
- A decorative graphic consisting of several parallel white lines of varying lengths, slanted diagonally from the bottom right towards the top right, set against the blue background.


INTERIM USE PERMIT--CONCEPT

- ▶ SIMILAR IN FEEL TO THE RESIDENTIAL PARKING PERMIT
 - ▶ SHORT TERM PARKING OR BY PERMIT
 - ▶ ALLOWS DOWNTOWN LONGER TERM USERS (EMPLOYEES, RESIDENTS, STUDENTS) OPPORTUNITY TO PURCHASE ON-STREET PARKING BEYOND TIME REGULATIONS
 - ▶ ADDITIONAL TOOL TO BACK FILL IN AREAS WHERE MANAGED SHORT TERM PARKING SHOWS LOWER THAN DESIRABLE OCCUPANCIES
 - ▶ USE OF UNDERUTILIZED PARKING AS A MEANS TO MAXIMIZE SUPPLY AND SUPPORT REVENUE GENERATION AND EXPENSE RECOVERY
- 

INTERIM USE PERMIT—LOGISTICS

- ▶ PERMIT SALES LIMITED TO BLOCK FACES OF A CERTAIN OCCUPANCY
 - ▶ BLOCK FACES BELOW “EFFICIENT & ROBUST” OCCUPANCY? (LESS THAN 70%)
- ▶ PERMITS SOLD AT “MARKET RATE”
 - ▶ TARGET OCCUPANCIES BETWEEN 70-85%
 - ▶ BASE COST = COST RECOVERY OR JUST ABOVE BUS PASS PRICE?
 - ▶ # OF PERMITS CONTROLLED SO SUSTAINED OCCUPANCIES DO NOT EXCEED 85%
 - ▶ SALES SHOULD BE ADJUSTED (PRICE AND QUANTITY) BASED ON OCCUPANCY DATA
 - ▶ QUARTERLY, SEMI-ANNUALLY, ANNUALLY, BI-ANNUALLY?
 - ▶ PERMIT SALES VIA MOBILE APPLICATION?
 - ▶ CAN BE SOLD IN VARYING TIME BLOCKS—DAILY, WEEKLY, BI-WEEKLY, MONTHLY
 - ▶ POSSIBLE DISCOUNT FOR CARPOOL/VANPOOL?
- ▶ LONG TERM PERMITS CAN BE REDUCED IF SUPPORT FOR SHORT TERM REGULATIONS IS IDENTIFIED

INTERIM USE PERMIT—GOALS

- ▶ REDUCE the number of single occupancy vehicles
 - ▶ Maximize use of the right of way
 - ▶ Maintain occupancies at “efficient and robust” levels
 - ▶ Shift parking behaviors on constrained blocks to those blocks with lesser occupancies
- 
- A decorative graphic consisting of several parallel white lines of varying lengths, slanted upwards from left to right, located in the bottom right corner of the slide.

INTERIM USE PERMIT—IMPLEMENTATION

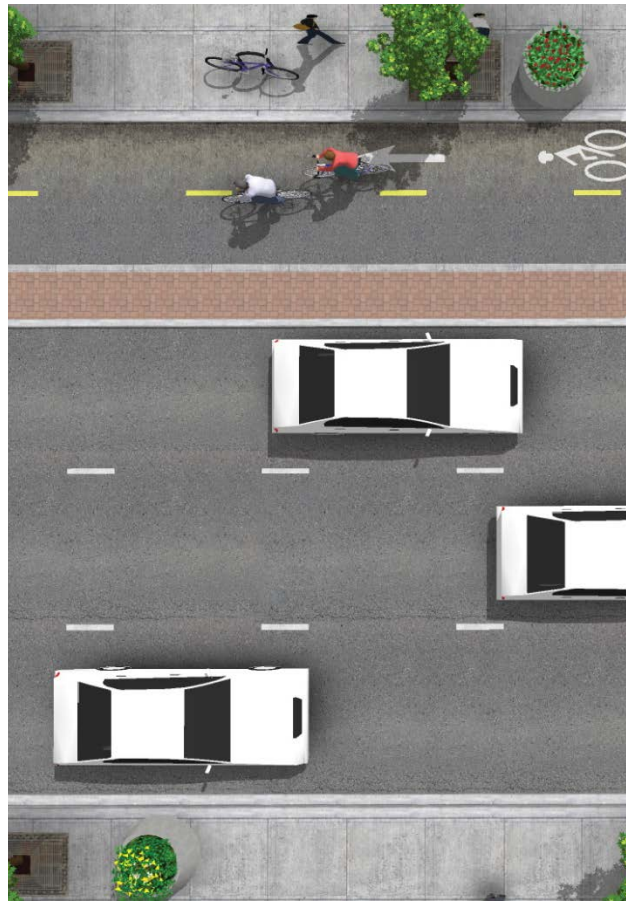
- ▶ MAY NEED REWRITE OF 11.05.260—CHECKING WITH LEGAL
- ▶ ELIGIBLE ONLY ON BLOCK FACES WITH 55% OR LOWER OCCUPANCIES (GREEN BLOCKS)
- ▶ PERMIT SALES SCALABLE TO ACHIEVE 70-84% OCCUPANCIES
 - ▶ RAMP UP SALES WHEN OCCUPANCIES ARE LOW
 - ▶ SCALE BACK SALES WHEN OCCUPANCIES ARE HIGH
- ▶ RECALIBRATED ANNUALLY WITH OCCUPANCY AND COMPOSITION ANALYSIS?
- ▶ INITIAL PERMIT COST COMPARABLE TO ADJACENT MARKET RATES?
 - ▶ AREAS WITH NO “MARKET RATES” WILL BE SET AT COST RECOVERY
- ▶ PERMITS SOLD VIA MOBILE APP?



Tacoma to Puyallup Regional Trail Connection

What do we mean by “Regional Trail Connection”?

A corridor for people walking & rolling that is physically separated from car traffic and safe for people of all ages and abilities.



Connecting our Regional Centers...and beyond!









ANTHEM
COFFEE & TEA

LANTHEM
COFFEE & TEA



211



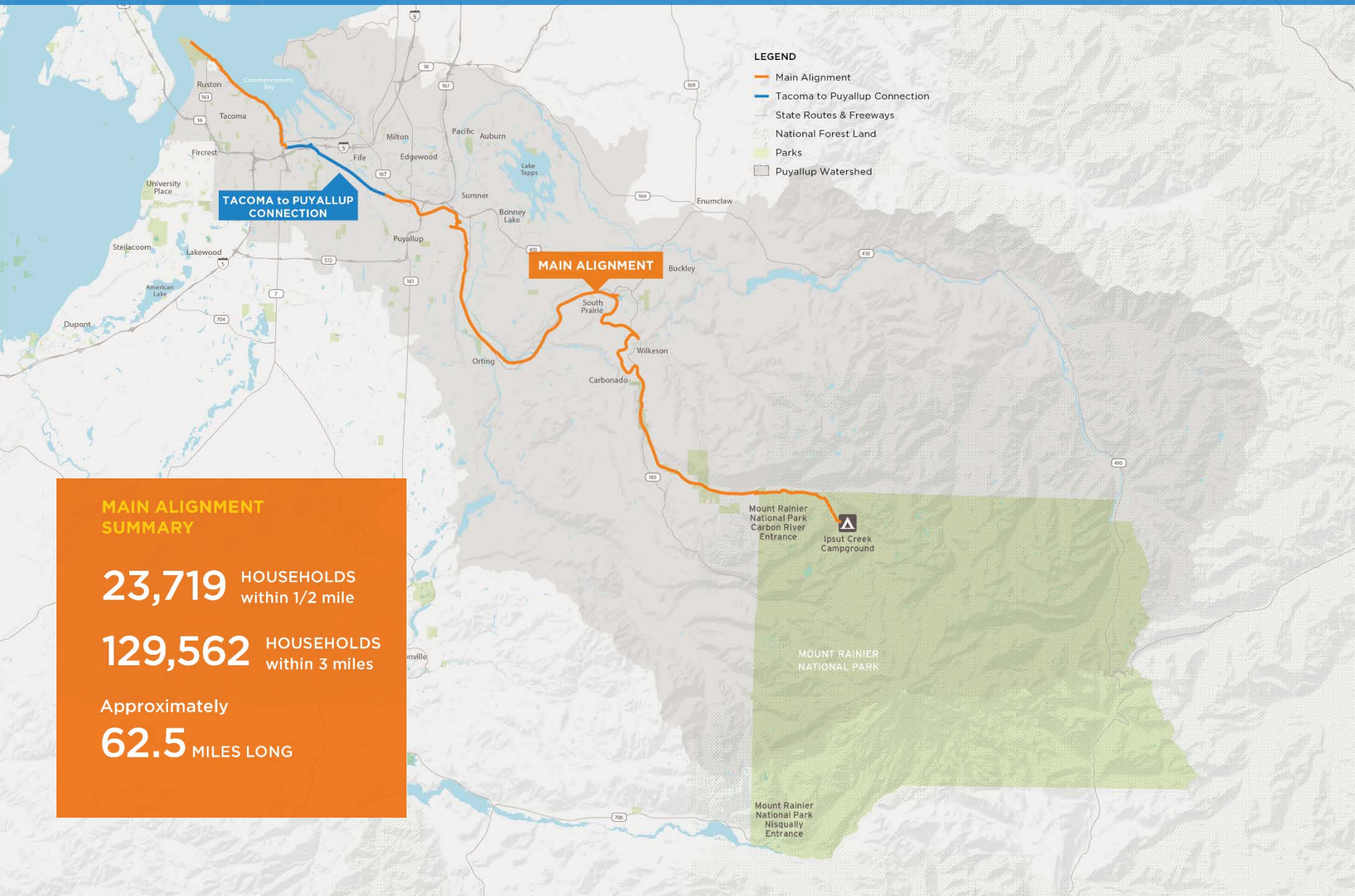
Linking to Transit



A Cohesive Network



TAHOMA to TACOMA TRAIL NETWORK



MAIN ALIGNMENT SUMMARY

23,719 HOUSEHOLDS within 1/2 mile

129,562 HOUSEHOLDS within 3 miles

Approximately

62.5 MILES LONG

If the Main Alignment were completed today, it could provide:



\$1,391,000 per year
in **Health Benefits**



\$3,225,000 per year
in **Transportation Benefits**



\$93,000 per year
in **Environmental Benefits**



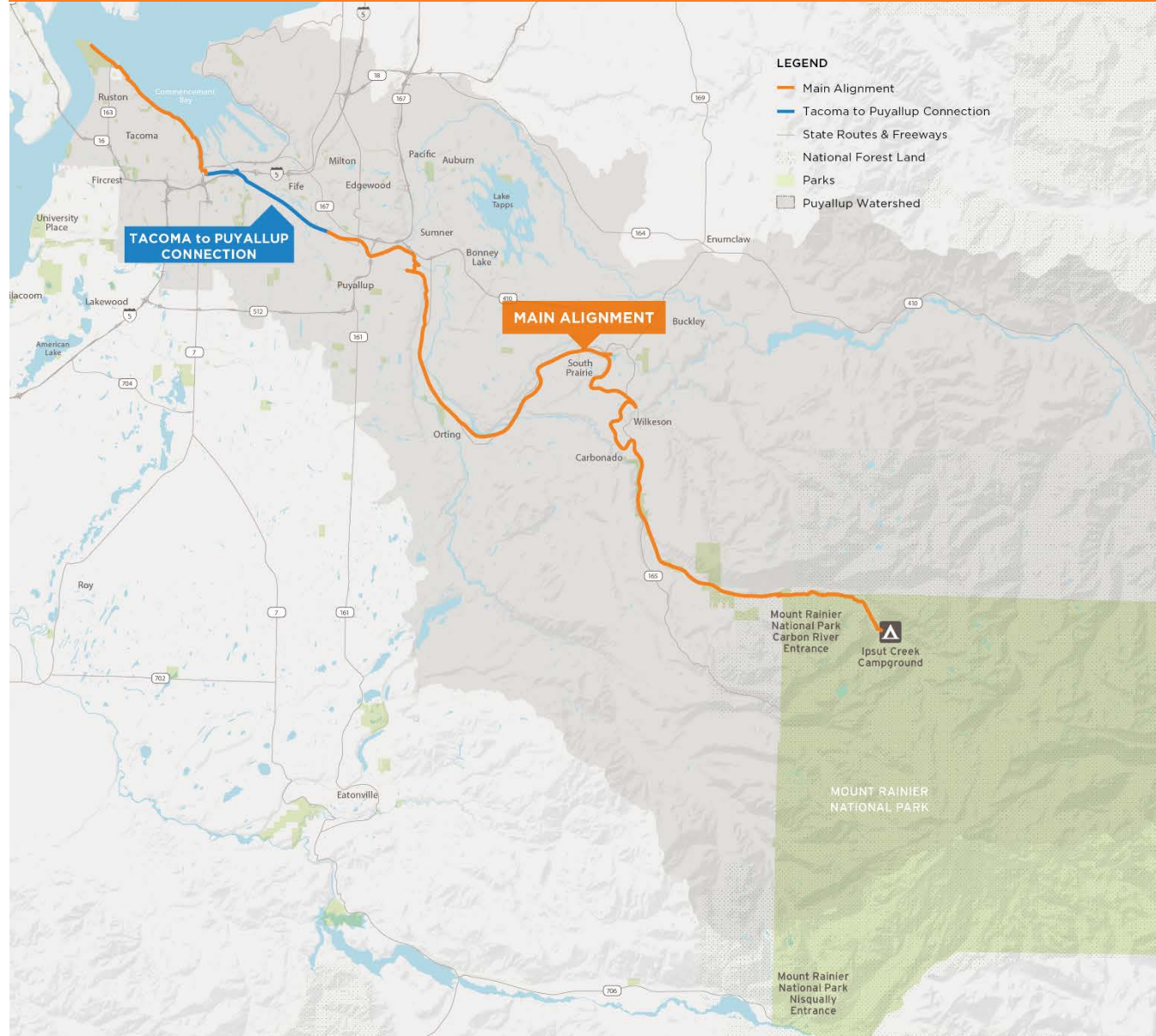
\$8,250,000 per year
in **Economic Benefits**



\$120,571,000 in
one-time Property Value Benefits

**TOTAL BENEFITS
PER YEAR**

\$12,959,000



Safety



There were 358 people hit by cars while walking or bicycling in Pierce County in 2017 – one person every day.

Equity & Access



57% of Tacoma residents say they would make a 3 mile, 15 minute bike trip at least once or twice a month if there was a safe and convenient bike route available



Community Support

Metro Parks Tacoma

*2016 Mission Led Comprehensive Plan Statistically Valid Survey
641 Households*

- Trails were the 2nd highest community priority (after restrooms).
- 72% of households indicated a need for soft surface walking and hiking trails
- 59% of households indicated a need for soft surface walking and hiking trails

Port of Tacoma

*Shoreline Public Access Plan
community survey, open houses &
stakeholder outreach*

The Port learned the following:

What needs improvement

- Wayfinding and interpretive signage
- Safety
- Pedestrian and bicycle amenities

What's missing

- Trail connections
- Views of the Port and downtown from Marine View Drive
- Picnic areas
- Trailered boat launch

Puyallup Watershed Initiative Active Transportation COI

Tahoma to Tacoma Trail Benefit Report community outreach

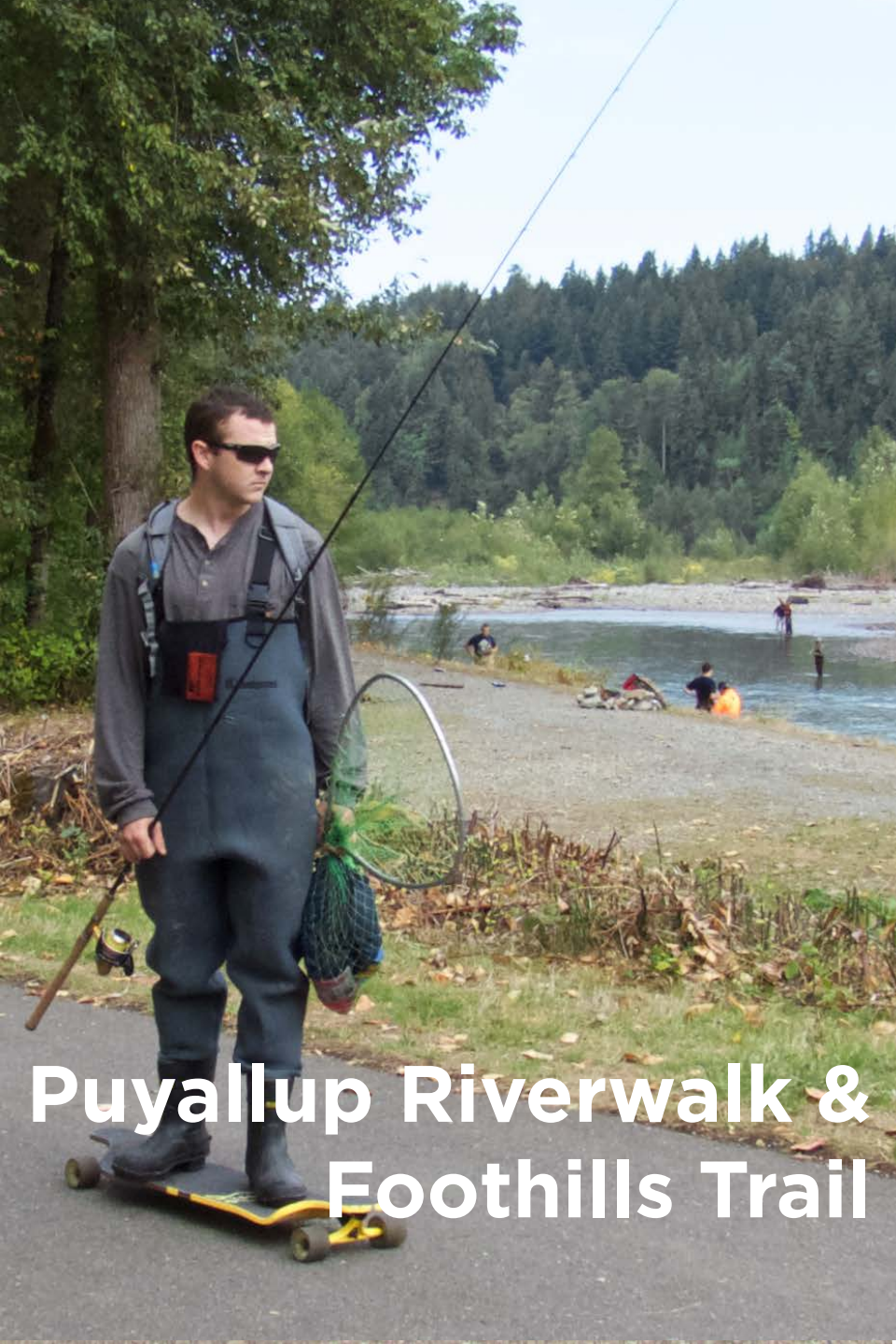
- Over 100 community members attended the Tahoma to Tacoma Trail Network kick-off in March 2016
- 2/3 of survey respondents ranked the Tacoma to Puyallup Connection as the highest priority trail in our region

Policy Support

A safe bicycle and pedestrian connection between downtown Tacoma and downtown Puyallup is referenced in the adopted policy documents of many local jurisdictions, including:

- Puyallup Tribe of Indians Tribal Transportation Improvement Program 2016-2020
- Puget Sound Regional Council 2014 Active Transportation Plan Regional Bicycle Network Gap Map
- Pierce County 2014 Parks, Recreation and Open Space Plan
- City of Fife Comprehensive Plan, Transportation Element
- City of Puyallup Comprehensive Plan, River Road Corridor Plan
- City of Tacoma Transportation Master Plan

Thea Foss Esplanade & Ruston Way



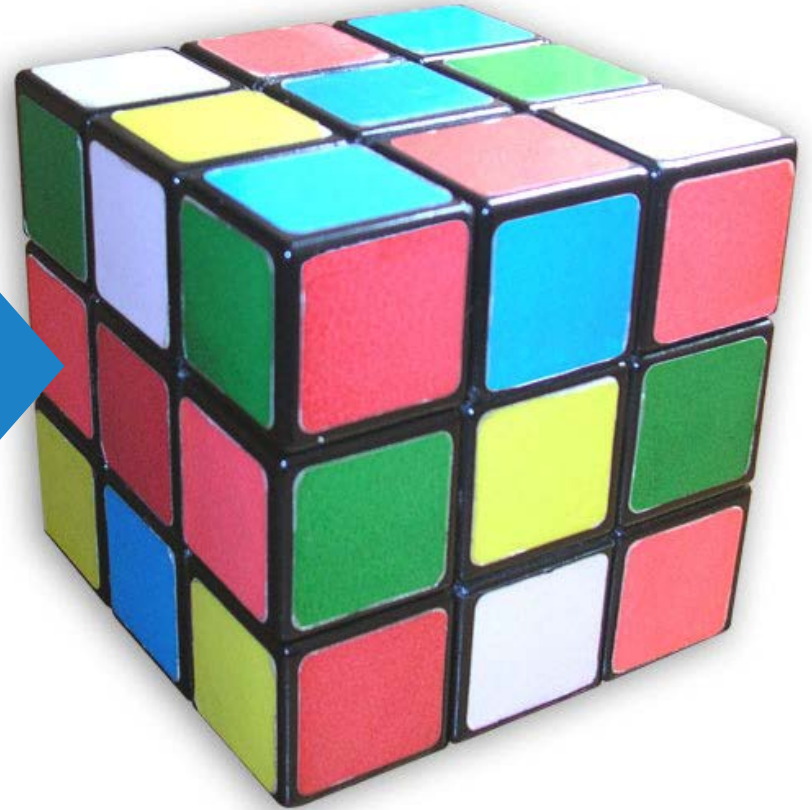
Puyallup Riverwalk & Foothills Trail

River Road/SR167



Google

**How can we
move this
project
forward?**



Andrew Strobel, Director of Planning and Land Use for the Puyallup Tribe, referred to the Tacoma to Puyallup Connection as the “Rubik’s Cube” of trail projects.

Local Non-profit Leads:



Puyallup Watershed Initiative
Active Transportation

Regional community coalition working to ensure that everyone in the Puyallup Watershed has access to safe, healthy, and affordable active transportation options



Tacoma's non-profit Transportation Management Association focused on being the transportation advocate & resource for anyone whose daily life is downtown

Partnered With:



Copenhagen-based design collective that promotes co-creation and democratic urban design

With Funding From:



Private foundation dedicated to strengthening the relationship and goodwill between Denmark & the U.S.



Puyallup Watershed Initiative
Active Transportation

Our community coalition budgets by consensus and identified the MasterClass as a priority project

Tacoma to Puyallup Connection MasterClass



MasterClass Process

- **June 6: Convene the Cohort**
Facilitated workshop with COurban team - grounding our work in health & equity, project background, & trip logistics
- **August 5-10: Travel to Copenhagen & Malmö**
Focused & collaborative learning with COurban
- **Fall 2018: Cohort Debrief & Next Steps**
*Post-trip facilitated workshop with COurban
Building the bench of project supporters
Consensus project goals & draft alignments*
- **Implementation**
Move forward on funding, community outreach, route selection, design, & construction

Consensus Project Goals

The Tacoma to Puyallup Regional Trail Connection will...

Safety

- Be safe for, and be perceived as safe by, community members of all ages and abilities.
- Ensure safety & access for all active transportation modes.
- Protect vulnerable road users, reducing opportunities for vehicle collisions.

Health & Equity

- Provide residents, workers, and visitors with viable transportation options that are safe, healthy, and affordable – particularly those who are unable to drive due to age, ability, legal status, or access to a household vehicle.
- Make exercise and activity easier to incorporate into daily life.

Livability & Economy

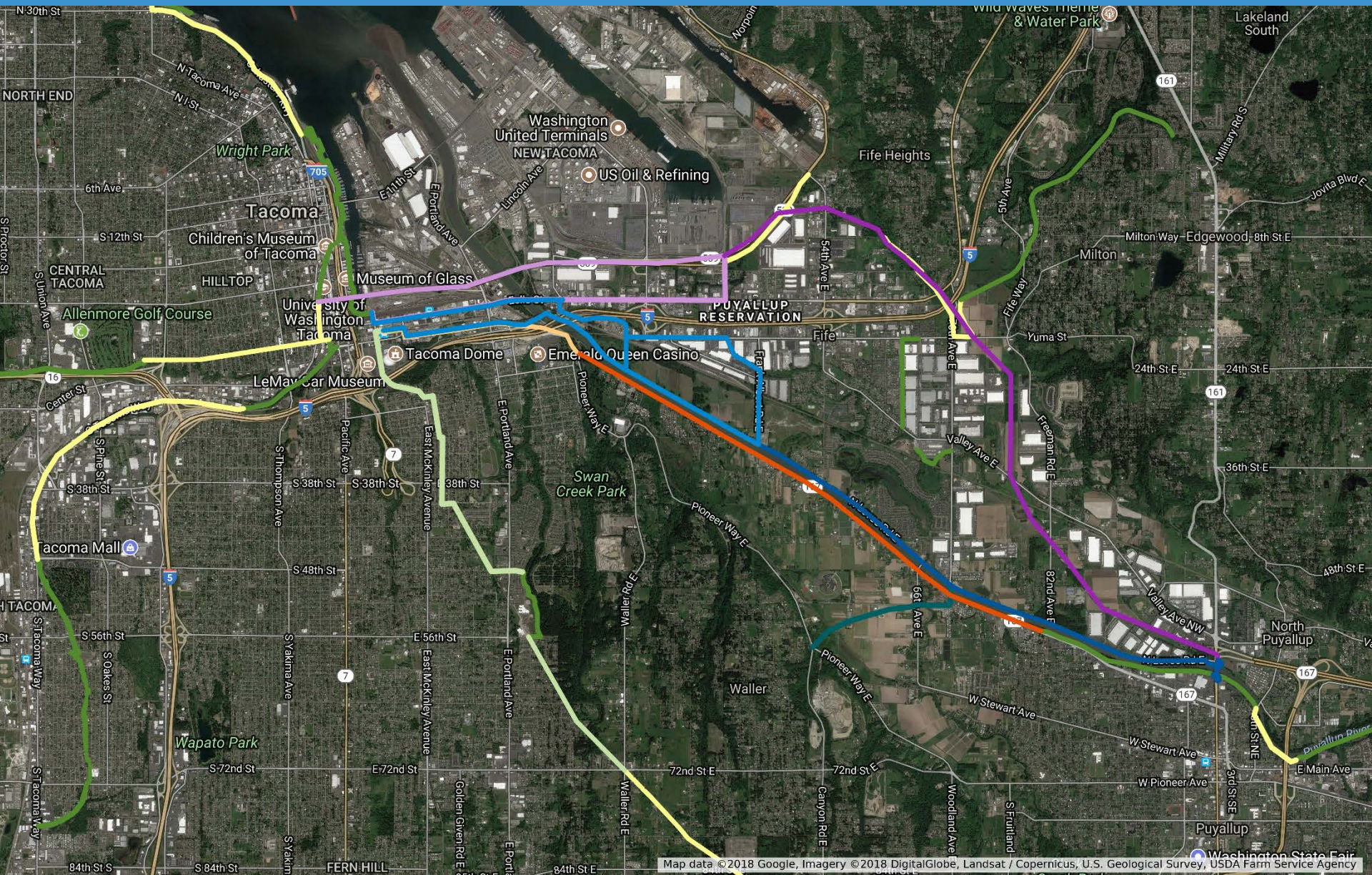
- Strengthen the region's position as a vibrant community to live, work, and play.
- Create a spine that will connect with employment centers, transit nodes, community destinations, and existing and future trails.

Environment

- Provide transportation options that reduce oil consumption, greenhouse gas emissions, and stormwater runoff.

Tacoma to Puyallup Regional Trail Connection

Potential Draft Alignments



Route Analysis Scope of Work

- Contract with WSP & PRR managed by WSDOT
- Scope Elements:
 - Existing Conditions Analysis
 - Stakeholder Outreach and Coordination
 - Tacoma to Puyallup Stakeholder Advisory Group
 - Community Forum
 - Develop Evaluation Criteria
 - Alternatives Refinement & Evaluation
 - Potential Funding Sources
- Total Budget: \$183,821

Next Steps

- **Finalize local contributions to Route Analysis Study**
 - Confirmed:
 - \$20,000: City of Fife, City of Puyallup, and Metro Parks
 - \$30,000: WSDOT
 - In Process:
 - \$30,000: City of Tacoma, Pierce County, Puyallup Tribe
 - TBD: Port of Tacoma
- **Continue engagement with nearby projects**
 - *WSDOT's \$1.09 billion SR167 Completion Project*
 - WSDOT SR167 Stage 1b Bike/Ped Subcommittee: two-mile highway connecting I-5 to SR 509 near the Port of Tacoma
 - *Sound Transit's Tacoma Dome Link Extension planning*
 - *Pierce County Canyon Road crossing*
 - *Local planning projects*
 - **Long-term funding conversations**

Stay Connected

Liz Kaster, lkaster@pwi.org

Puyallup Watershed Initiative Active Transportation COI

Kristina Walker, kristinaw@downtownonthego.org

Downtown on the Go

Sign up for project updates at:

www.pwi.org/connect253



